



EARTHWORKS



Volume 14, Issue 112

December, 2020

Workday, Etc., November 2020

By *Bill Gurry*

Chief Ranger Anthony Winegar gave us a short introduction to "Compliance" to help us understand NPS procedures on November 11th. This will be useful for future planning. Afterward, Geoff, Andy, Bob, and Bill went out to clean a culvert and ditch on Gilbert Road.

On November 14, 20 KSU cross country runners and two coaches came out to do some annual maintenance on the Brumby trail and the fire road on the mountain. We had 3 sites a mile apart and each site was about 300 feet long, so we were able to distance. Thanks to crew leaders Geoff, Fred, Mike, Bruce, Bill, Donald, Coach Rich, Glenn, Eric, and

INSIDE THIS ISSUE

- 1 Workday, Etc., November 2020
- 1 Zeta Took Its Toll At The Park
- 1 January Newsletter Deadline
- 2 Whoozs Thh Man!
- 2 We Wish You All Season's Greetings
- 2 Mountain Top Concession Stand Closed
- 3 A Special Thanks!
- 3 Wanted: Membership Chair!
- 3 Crew Leader & Trail Ambassador Positions Available!
- 3 Beginning Fresh in the New Year!
- 4 2021/2022 Fund Raising
- 5 Kennesaw Mountain Trail Club Calendar
- 5 Register for Our Work Days!
- 5 Mark Your Calendars!
- 6 Photos by Anne Page Mosby
- 7 In Case of Emergency:
- 7 Cobb County Emergency Location Marker (ELM) Program
- 8 Friends Sponsors A Meet And Greet at Marietta Wine Market.
- 9 KMTC Contact List - Updated 10/27/20
- 9 The Friends Of Kennesaw Mountain
- 10 A Year That Was - 2020
- 11 11/14/20 Work Day!
- 12 Sponsors/Partners Corner

the Trail Ambassadors for helping out. And the old marine (Doug) met us for the debriefing meeting.

Lesson learned: Be sure to check the gas on the Gator before you head way out on the Brumby trail. Thanks to Bruce and Norm from maintenance for coming to get me. Rena had to walk the 2 miles back – it became a 14-mile walk by the time we left Laredo's.

Zeta Took Its Toll At The Park

Per the Park staff, over 200 trees were felled by Zeta - and these were just the ones that fell on the trail or on/near the roads that cross through the Park. Richard Kozicki photographed this blowdown. Anne Page Mosby photographed the one on page 7, near the open meadow on the 24-Gun Trail.



Photo by Richard Kozicki.

January Newsletter Deadline

If you wish to have an article published in the January Newsletter, please submit it to Fred Feltmann at faf1948@bellsouth.net no later than December 20th!

PS Even if you're just a "volunteer," you can also present an article for publication - and you won't be the first!

Whoops Thh Man!

Not necessarily a question more like a statement with bad spelling. Don't correct it or give it too much thought as that is usually the case. Confusing isn't it. But, it's something that we've heard before. Anyway it's also something I and possibly many others don't miss. Most frequently those who did yell out, "Who's the man" did so during pro golf tournaments. Yes, it was frequently yelled out without giving any thought about the disruption it probably caused the golfer and fans. Also, without the crowd of fans now the phrase seems to be a distant memory; didn't give it much thought then and don't have to think about it now.

Of course this fact of few fans was really brought to light during the recent Masters Golf Tournament. If you watched it then you'll recall how exciting it was even without the throngs of people standing there watching every stroke. Also, it should be noted that the "Master's" is among the least vocal crowd voicing interruption during tournaments. The players know well what they're doing and certainly don't need to be reminded by someone yelling out from the crowd.

Actually (to me) watching golf is akin to watching paint dry, but sometimes it's fun to watch something that you have no intention of doing, Unlike sports now on TV that add in crowd noise, golf didn't do that. To me that is like being out on the trail, there is no crowd noise. When you're working on a trail project, you get the job done without people watching over you. Can you recall shouting out "Who's----!", when a rock was placed or a direction was given; probably not. But that doesn't take away the feeling of accomplishment when doing it.

Sometimes a golf shot goes astray, off course; that happens, Just like an actor recently said, "The whole world went sideways." Well, in that case, or time you just have to deal with it. Get on the ball and take your best shot, regroup to do it safely and get on.

Now we're in the Holiday season, there are still many visitors to the park, especially on the pretty days. There have been a few work sessions, but things are different. There's work to be done, but most projects will have to wait, just like the "Masters" was rescheduled; you'll be back at it. There were recent storms that brought down a bunch of the "Old Growth Trees" in the park and area; thankfully they came down at night and no one was in harm's way. No need to bring up the thought of if a tree falls, does it make a sound if there's no one around to hear it.

The sketch "says" a lot. Ol' St. Nick goes about spreading

joy at night, no noise, no shouting, just gets it done - Santa may be wearing a mask this year but he's still "The Man" full of Christmas cheer.

Happy Holiday Wishes and Thanks,

Doug Jasse



We Wish You All Season's Greetings

The KMTC Board Members, Crew Leaders and Trail Ambassadors extend Season's Greetings to all of you. We also hope you have a safe and merry Holiday Season and we hope that the New Year will be much better than this year!

*Season's
Greetings*

Mountain Top Concession Stand

Closed

The Mountain Top Concession Stand is closed for the season. It will probably open again around Memorial Day Weekend.

"Earthworks" is published monthly by the Kennesaw Mountain Trails Club.

Editor: Fred Feltmann
770-516-9120

E-mail: faf1948@bellsouth.net

Additional Volunteers needed! Call today!

A Special Thanks!

Each year we have various groups who come out and help us. Henceforth, we will make every attempt to list your group here for the current/past fiscal year. If you are participating as a group, be sure to let us know when you are registering!

Following is a list, in alphabetical order, of the groups who participated during Fiscal 2019 (October 2019- September 2020 and Fiscal 2021 (October 2020- Present):

FY 2020

ALLATOONA HS NJROTC

BOY SCOUT TROOP 89

KING'S ACADEMY HS ARMY JROTC

HILLGROVE HS NJROTC

POPE HS - NATIONAL HONOR SOCIETY

RIVER RIDGE HS

RIVER RIDGE HS ARMY JROTC

TRUST (KSU)

WALKER HS



FY 2021

KSU CROSS COUNTRY TEAM

We had 20 members of the KSU cross country team participate in our November 14th work day, along with approximately 15 Crew Leaders and Trail Ambassadors.

Thanks!



Crew Leader & Trail Ambassador Positions Available!

Contact Bill Gurry (regarding Crew Leader positions) or Janie Brier (Trail Ambassador positions) if interested.

Bill Gurry - trails@kennesawmountaintrailclub.org

Janie Brier - ambassador@kennesawmountaintrailclub.org



Beginning Fresh in the New Year!

By: Amanda Corman, Volunteer Coordinator

As we approach the new year, one tradition has not changed during 2020. That tradition is reflecting on the previous year and thinking about improvements for the next. A year ago, Kennesaw Mountain National Battlefield Park was looking forward to having another successful year with new volunteers joining our team. Of course, this changed in March with the COVID-19 pandemic. Even with this great change to each of our lives, Kennesaw Mountain volunteers have continued their work and dedication to the park. In 2021, Kennesaw Mountain volunteers will continue to adapt and overcome any changes that we may be presented with in the upcoming year.

With the new year upon us, it is once again time for each volunteer to renew their volunteer agreement and COVID-19 forms. The National Park Service requires that each year, new agreements must be on file for the safeguard of each individual volunteer. Without completed current forms on file, you will not be able to volunteer within the National Park Service, thereby, ensuring your safety while you are volunteering at Kennesaw Mountain National Battlefield Park.

Beginning in January 2021, all position-based/regular/recurring volunteers, regardless of position or when their agreement was last signed, will be required to fill out a new volunteer agreement and COVID-19 form. These are volunteers who are active members of the Kennesaw Mountain Trail Club (KMTC officers, crew leaders, and Trail Ambassadors) and members of Friends of Kennesaw Mountain (officers and active members).

To fill out these forms, please schedule an appointment with Amanda Corman, KEMO Volunteer Coordinator, at KEMO_volunteer@nps.gov or call at 770-615-1801. By scheduling an appointment, this will ensure that Ranger Corman will be available to assist you and that you receive all the correct documents to continue volunteering at Kennesaw Mountain.

Thank you and we wish each of you a happy and safe holiday season.

2021/2022 Fund Raising

Your volunteer hours help greatly for the many projects we do in the park and we greatly appreciate you contributing your “sweat equity” alongside our 80+ staff volunteers who routinely support each event. We are a non-profit all volunteer organization. However, like any business, we do have bills to pay.

Many of our projects are funded by the park or through grants we apply for. These funds are typically targeted for specific projects and do cover the big expenses such as rocks, stone dust, dirt, wood beams, bridges, fences, and such. But, after all the big stuff is paid for, we still have need to cover our day-to-day operating expenses for things like saw blade sharpening, fuel, tool repairs, equipment maintenance, work gloves, bug spray, drinking water, snacks, and porta-potties, along with basic business expenses - e.g. insurance. For these expenses, we rely on your donations.

Each year we kick off a new round of fund raising and this is the 2021/2022 big “ask.” We need your help with this, even small donations help. We will conclude this drive at the end of FY 2022 (September, 2022).

As we approach our 19th year in operation, we ask you to please think ‘20’, like \$20.. \$40.. \$60..... \$200... \$2000. All donations to the Trail Club support our work at the park, and are tax deductible.

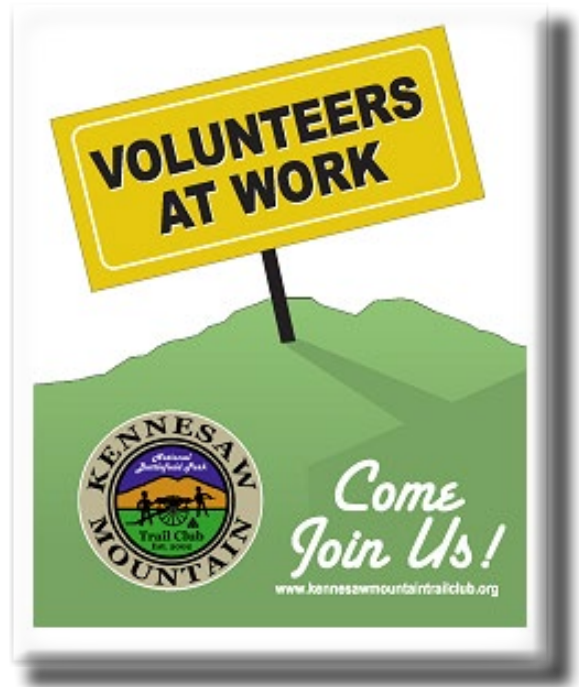
We are a nationally recognized club - having been presented the highest award in the National Park Service in 2014, “The Hartzog Award for Volunteer Group.” There are several ways to donate:

- Use Guidestar on the bottom of our home page on the Trail Club website <http://www.kennesawmountaintrailclub.org>
- Subscribe to Amazon “Smile” where they will donate to us based on your purchases <https://smile.amazon.com/> - look for KEMO Trails Corps
- Send a tax deductible contribution to:

Kennesaw Mountain Trail Club*
Attn: Tom Okerberg
Whitlock Accounting Services
739 Kennesaw Avenue NW
Marietta, Ga. 30060

ALSO: Please check with employers about matching donations.

* Corporate name is KEMO Trail Corps, Inc., a 501(c)(3) organization.



Kennesaw Mountain Trail Club Calendar

Date **Time** **Location** **Event**

All Work Days and events at Kennesaw Mountain National Battlefield Park are cancelled indefinitely at this point.

All trails are now open. All parking lots, and the Mountain Rd., are now open. Visitor Center is now open. The Mountain Rd. is still closed to motorized vehicles, however.

The Park staff is conducting Virtual Events on their Facebook Page - https://www.facebook.com/pg/KMNBP/posts/?ref=page_internal

We will send out an email when events warrant a restart of work days and events and when the Visitor Center reopens.

The Mountain Top Concession Stand is now open daily from 10 AM till 5 PM.

Register for Our Work Days!

Be sure to register online for our Work Days at [http://](http://signup.com/go/VvayYQj)

signup.com/go/VvayYQj. By registering, we can be better prepared with the amount of tools, bottled water, gloves, etc. on hand.



Mark Your Calendars!

Upcoming Work Day Schedule:

All planned work days for the upcoming months have been cancelled until further notice.

If your school, church, business, or community organization would like to schedule a special work day as a team building or public service activity once we resume our work day schedules, e-mail us at kmtctrails@kennesawmountaintrailclub.org at least 4 weeks in advance. Trail work can be performed any day of the week.

We work closely with the Park Service and assist the park staff by providing critically needed volunteer effort to install signs, build bridges, and maintain the 20+ miles of trails. Since our beginning in 2002, the Trail Club has donated over 45,000 volunteer hours to Kennesaw Mountain National Battlefield Park.

We hope to see you at a work day as soon as we return to our normal work days.

Photos by Anne Page Mosby



Original photo taken of Pigeon Hill in 1864.



Photo from approximately the same area in 2020.



In Case of Emergency: Cobb County Emergency Location Marker (ELM) Program

By Amanda Corman, Park Ranger

Two years ago, in late 2018, Cobb County became the first county in the state of Georgia to establish the Emergency Location Marker program. Known as ELM, these blue and white markers are located every quarter mile on the county's trail system. Based on U.S. National Grid (USNG) alpha numeric coordinates, these markers "quickly direct emergency responders to a location on a trail where a physical address might not exist (www.CobbELM.com)."

In 2020, Kennesaw Mountain National Battlefield Park was added to the Cobb County ELM system. Kennesaw Mountain NBP Law Enforcement has worked very closely with Cobb County to help ensure the safety of park visitors.

How to use ELM? As an individual hikes the trails and either is injured or comes across an injured individual, they call 911. When the 911 operator asks your location, the individual will provide the 8 numbers in the white box of the marker. If an individual is not near a marker, they only have short distance to reach one. These coordinates provide a more accurate location of an injured individual or accident saving time and saving lives.

In October 2020, Cobb County Safety Services hosted an "Family Fun and Outdoor Activity Safety" event at Kennesaw Mountain. With the support of park staff, visitors were able to learn about various safety programs provided by the county as well as the new ELM system. As the park liaison with Cobb County, Law Enforcement Park Ranger Bryan Harper is working closely with the county in providing community education regarding the ELM system and safety. Future safety events will be offered to help with training and safety education. If you are interested in participating, please contact KEMO_volunteer@nps.gov. For more information about the ELM program, please visit, www.CobbELM.com

See also:

<https://www.youtube.com/watch?v=T3oqekzQnac>

IN CASE OF EMERGENCY The Cobb County Emergency Location Marker (ELM) Program



The ELM System is used to help find people who need emergency assistance on Cobb's trail network.

The trail mapping system is a nationally recognized system allowing first responders to quickly and effectively locate someone in need.

www.CobbELM.com



HAPPY NEW YEAR 🎆

FELIZ AÑO NUEVO 🎆

BONNE ANNÉE 🎆

FROHES NEUES JAHR 🎆

GOTT NYTT ÅR 🎆

Friends Sponsors A Meet And Greet at Marietta Wine Market.

On Saturday, November 21st, The Friends of Kennesaw Mountain held a Meet And Greet at Marietta Wine Market, with Superintendent Patrick Gamman in attendance. It was an excellent opportunity to meet him and see what directions he plans for the Park.





FRIENDS OF KENNESAW MOUNTAIN

The Friends Of Kennesaw Mountain

The Friends of Kennesaw Mountain's mission is to raise funds to support programs and projects at the Kennesaw Mountain National Battlefield Park.

Your Membership helps to fund this mission.

Please join us.

Our website is FriendsOfKMNB.org.

Visit to find out more info, to donate, or to sign up for one of our Board positions or to register as a member of the Friends organization.

Our Mission:

The mission of the Friends of Kennesaw Mountain is to work in partnership with the National Park Service and the local community to raise annual funding for projects and activities in the Kennesaw Mountain National Battlefield Park.

Programs supported: Outdoor Education
Living History

KEMO Trail Club
Trail Ambassadors

KMTC Contact List - Updated 10/27/20

<u>POSITION</u>	<u>NAME</u>	<u>E-MAIL</u>
President	Donald Olds	president@kennesawmountaintrailclub.org
Vice President	Vacant*	vp@kennesawmountaintrailclub.org
Secretary	Robert Brier	secretary@kennesawmountaintrailclub.org
Treasurer	Tom Okerberg	treasurer@kennesawmountaintrailclub.org
Trails Director	Bill Gurry	trails@kennesawmountaintrailclub.org
Community Volunteer Director	Rena Bailey	volunteerdirector@kennesawmountaintrailclub.org
Communications Director	Fred Feltmann	comdirector@kennesawmountaintrailclub.org
Newsletter Editor	Fred Feltmann	comdirector@kennesawmountaintrailclub.org
Information/Technology Director	Jerry Givan	webmaster@kennesawmountaintrailclub.org
Trail Ambassador Director	Janie Brier	ambassador@kennesawmountaintrailclub.org
Plants Director	Danny Leigh	plants@kennesawmountaintrailclub.org
Fundraising Director	Scott Mackay	fundraising@kennesawmountaintrailclub.org
Records Management*	Laurie Poppell*	records-management@kmtrailclub.onmicrosoft.com

Amazon Smile

<https://smile.amazon.com/>

KMTC Website

<http://kennesawmountaintrailclub.org>

NPS Website

<https://www.nps.gov/KEMO>

Facebook Page

<http://www.facebook.com/kmtcsocial>

Volunteer Sign-up website

<http://signup.com/go/VvavYQj>

* updated

A Year That Was - 2020

Photo selections by Jay Haney



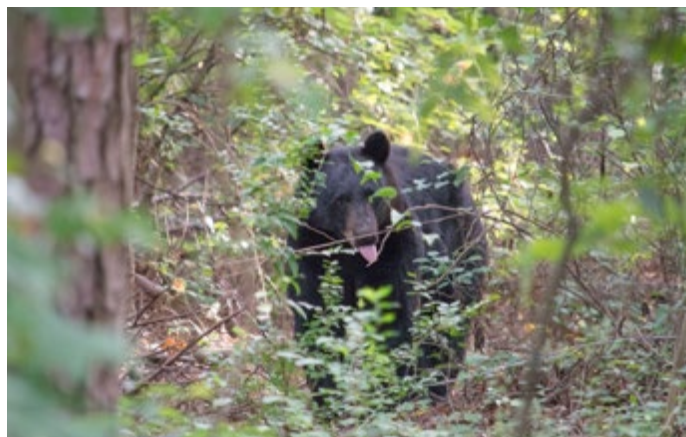
February 8th - it snowed; work day cancelled. We decided to clean the storage area.



Crew Leader, Ken Hale. RIP



Roadbed collapses over culvert on Fire Rd.. Emergency repairs completed to insure safety of hikers and horseback riders.



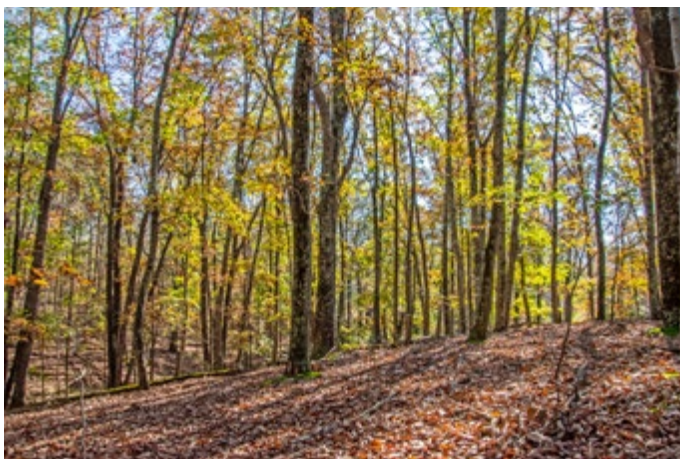
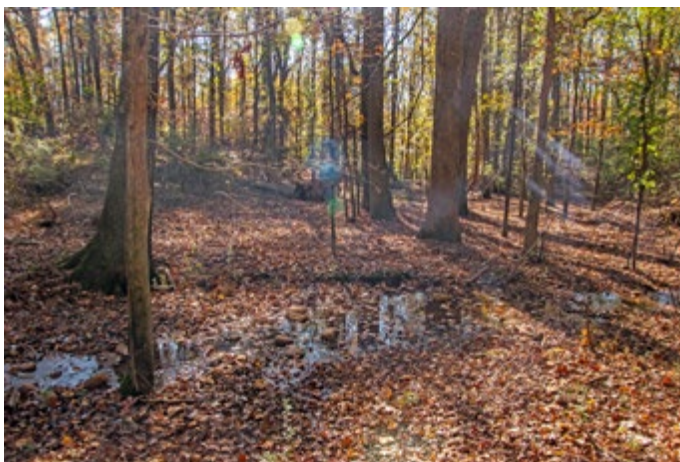
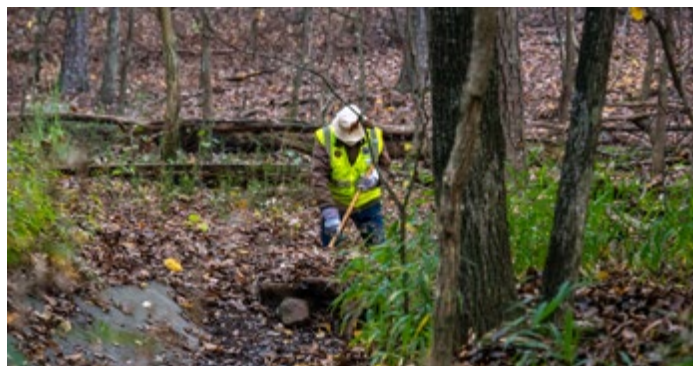
All the past rumors. Yes, this summer there WAS a bear in the Park!

And Covid-19 paid a visit - and most of our work days were cancelled this year. We could only work in small groups - and then only with volunteers from the Trail Club staff. We did get one work day in with the KSU Cross Country team - see pages 1 and 11.



11/14/20 Work Day!

Finally, a Work Day! Photos by Fred Feltmann
(A combination of a work day and a walk-in-the-park.)



Sponsors/Partners Corner

Many thanks to our Sponsors and Partners for their support!



<http://americanhiking.org>



KENNESAW MOUNTAIN NATIONAL BATTLEFIELD PARK

Trail Maintenance Map

