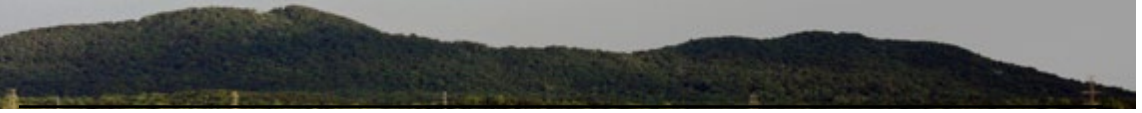




EARTHWORKS



Volume 15, Issue 1

January, 2021

Small Pigeon Hill Workday

On December 12, 2020, Dr. Dyal from KSU brought 3 very enthusiastic health class students to Pigeon Hill to work with Scott, Fred, Mike, Geoff, Rena, and Bill to fix a problem on the trail just below the earthworks. This trail was built long ago straight up the fall line and has been eroding for as long as I can remember. You may remember ruts a foot deep on this trail. The trail itself had eroded nearly 2 feet



Photo by Bill Gurry

Continued on Page 2

INSIDE THIS ISSUE

- 1 Small Pigeon Hill Workday
- 1 Lead the Pack – Why Should I care?
- 1 February Newsletter Deadline
- 2 Trail Ambassador Highlights December
- 3 Mountain Top Concession Stand Closed
- 3 What's The Big Deal With The "Pooh Bags?"
- 3 The Friends Of Kennesaw Mountain
- 4 Does It Pay To Designate KMTCC On Smile.Amazon.Com?
- 4 "Skepticism" (Oh No-That Can't Be)
- 4 New Park Maps Available!
- 5 A Special Thanks!
- 5 Crew Leader & Trail Ambassador Positions Available!
- 5 Adieu, Cam, We'll Miss You!
- 5 Wanted: Membership Chair!
- 7 2021/2022 Fund Raising
- 8 Kennesaw Mountain Trail Club Calendar
- 8 Register for Our Work Days!
- 8 Mark Your Calendars!
- 9 Work Day - 12/12/20
- 13 Cam Graham - A Photo Essay
- 13 Contact List - Updated 10/27/20
- 14 New Park Maps!
- 17 Sponsors/Partners Corner

Lead the Pack – Why Should I care?

Many of us are dog owners and we know that dogs like to poop, especially just after eating and shortly into any exercising. In fact, we like this behavior because it makes those early morning and late night walks a bit easier to deal with. But, in a park like ours, we really don't want to be seeing the accumulation of poop bags along the trails. I can tell you that the park disposes of hundreds of them from the waste containers every day and we are all thankful that most people are conscientious enough to bag and properly dispose of their dog's waste.

However, many people still don't bag their dogs waste. And some do bag it but either leave it along the trail side or fling it a few feet into the woods. These are the people we are trying to reach and educate so they will change their habits. Their hundreds of bags are piling up all over the park.

Let me first resolve myth #1, there is no "poop fairy" who comes by every night and picks these up.

For myth #2, the poop bags are biodegradable, what's the big deal? Well, yes, they are biodegradable, but it takes three to six months to occur if adequate sunlight and moisture are present. And, they don't just vaporize, they dissolve into a sludge of chemicals that then leach into the soil and cause other problems. Most biodegradable bags are designed for our landfills, not our parks.

Myth #3 dog poop is good fertilizer. Well that is absolutely not true. Unlike cows and horses who are herbivores; dogs

Continued on Page 2

February Newsletter Deadline

If you wish to have an article published in the February Newsletter, please submit it to Fred Feltmann at faf1948@bellsouth.net no later than January 20th!

PS Even if you're just a "volunteer," you can also present an article for publication - and you won't be the first!

Lead The Pack... Continued from Page 1

(and people) are carnivores and eat a high protein diet that leaves their waste in an acidic state and is high in nitrates that change the soil composition in a way that is harmful to plant life. Dog poop also contains bacteria and parasites that can infect other dogs and people, especially if it gets into the streams. Yes, carnivore waste can be converted to a plant fertilizer but it takes proper composting to add lots of carbon materials (plant compost) and heating the mixture (+165F) to kill the bacteria and parasites (giardia, hookworms, trichinosis, etc).



And then there is myth #4, no one will ever know if I just fling it while no one's around. Well, first, God is always watching. Second, you never know who might also be watching. It's sad that laws have to be made to get all to be good stewards of our earth, but not picking up after your pet is a crime in the park and subject to fines and usually mandated community service. Can you imagine being brought up in front of a judge in "litterbug" court?

So what are we doing to help solve the problem? First, is education. New poop stations are going up in the park with posters to remind us about picking up after our pets and providing us with landfill friendly poop bags and special receptacles to collect them for proper disposal. And, we are posting articles in the local papers and editorials like this one in our newsletters. Second, the park is adding more poop stations a bit deeper into the more frequented trails to make it easier for those whose pets like to poop after some exercising gets started.

Does this all cost the park more money? Yes, it's not just putting up the poop stations, the park must buy the bags and

properly dispose of the waste. But, we feel it is worth it if it helps reduce the amount of poop bags we are seeing along the trails. Please help us by doing your part by picking up after your pet and disposing of the bag in the proper way. Help make our park more beautiful and safe.

Your membership in Friends of Kennesaw Mountain helps with programs like this and many others that support the park. Friends of Kennesaw Mountain is a volunteer run registered 501(c)3 non-profit. See <https://friendsofkmnbp.org/> to join.

Scott Mackay

President of Friends of Kennesaw Mountain
Crew Leader of Kennesaw Mountain Trail Club

Small Pigeon Hill Work Day Continued from Page 1

in places over the years. In previous years, rocks and dirt were brought in to build water bars as, other than a reroute, no other option was feasible. The effort has been largely successful.

Recently, hikers had been walking around the timber water bar shown in the photo that was created to stop water from above turning the corner and eroding the trail. We added some low rock steps and a terrace to make the trail more gradual and inviting to hikers and trashed the social trail. Also, we rebuilt a rock water bar below where someone had moved the rocks and cleaned loose sand and silt out of others. This probably needs to be done every year or so.

Thanks to all who participated.

Bill Gurry
Trails Director

Trail Ambassador Highlights December

The first quarter of fiscal year 2021 has been a productive time for the Trail Ambassadors. While interpretive events are still not available as a volunteer experience, the Trail Ambassadors (TAs) continue to perform their primary role of hiking the trails, helping guests and reporting adverse trail conditions to the park staff. In addition, we were able to present 2 Trail Ambassador Orientations with a gain of 9 new Trail Ambassadors this quarter!

Since the beginning of 2020 large groups for in person education hasn't been possible. Enter Master Educator for Leave No Trace, Jay Dement, the Zoom application and 15 eager participants who spent 2 hours in a Leave No Trace Awareness class. Since all the participants are experienced volunteers, Jay gave us a more in-depth awareness class than the usual. For me it was nice to dress in my most comfortable clothes, drink coffee, pet the dog and have a great class with a bunch of nice folks I haven't seen in a long time. I digress. Thanks, so much Jay, for the great class!

Continued on Page 4

"Earthworks" is published monthly by the Kennesaw Mountain Trails Club.

Editor: Fred Feltmann
770-516-9120

E-mail: faf1948@bellsouth.net

Additional Volunteers needed! Call today!

Mountain Top Concession Stand Closed

The Mountain Top Concession Stand has been closed for the winter and spring. It will again reopen around Memorial Day Weekend.

What's The Big Deal With The "Pooh Bags?"

Here it is in a nutshell. Someone has to go and pick them up. They don't magically go away. And that somebody is the gentleman pictured herein, or one of our other trail club members. All Volunteers. They have better things to do in the park



than this. The Park staff does not have the time or manpower to go and pick them up either. Nor would you want to pay our tax dollars for this effort. And it's not just a bag or two, nor just along side the trail, as this one. We've had volunteers pick up 20 or more bags in one afternoon just on the trail from the Visitor Center to the top of Kennesaw Mountain. Some of our visitors think nothing of pitching them off the trail into some



pretty hazardous areas. And Our volunteers are not the young either - most are in their late 60's or older - not someone you'd want going off trail to pick up garbage, such as pooh bags or the very heavy empty water bottles that are too cumbersome for our visitors to carry back to the Visitor Center or parking lot to dispose of them in a trash can or recycle bin. One of the worst places these are thrown is off of the Mountain Road that goes up to the parking lot on top of Kennesaw Mountain. There is no way to safely pick these items off the side of the road. So there they just rot and create an eyesore.

Fred Feltmann



**FRIENDS OF
KENNESAW MOUNTAIN**

The Friends Of Kennesaw Mountain

The Friends of Kennesaw Mountain's mission is to raise funds to support programs and projects at the Kennesaw Mountain National Battlefield Park.

Your Membership helps to fund this mission.

Please join us.

Our website is FriendsOfKMNB.org.

Visit to find out more info, to donate, or to sign up for one of our Board positions or to register as a member of the Friends organization.

Our Mission:

The mission of the Friends of Kennesaw Mountain is to work in partnership with the National Park Service and the local community to raise annual funding for projects and activities in the Kennesaw Mountain National Battlefield Park.

Programs supported: Outdoor Education
Living History

KEMO Trail Club
Trail Ambassadors

Trail Ambassador Highlights.... Continued from Page 2

I look forward to the time when we can have more workshops and eventually in person classes. Let me get to those Leave No Trace Principles.

Plan Ahead – Know the rule and regulations. Plan for weather, hazards and emergencies

Travel and camp on durable surfaces – In the Kennesaw Mountain National Battlefield park (KMNBP) camping is not permitted. Hike and ride on established trails

Dispose of waste properly – that means carrying one's trash (including the solid man's best friend treasure) and dispose in the appropriate trash receptacle

Leave what you find – everything in the park stays in the park. If you find something you think is a civil war relic don't move it. If possible, call the park staff and ask for further direction. Do not move the object unless specifically advised by the park staff.

Respect wildlife – keep a safe distance. Don't harass the wildlife. That includes telling people to keep their dogs on the leash (a park rule) so the animal can't chase the animals who make the park their home.

Minimize campfire impact – the only place one may have a fire at KMNBP is in the B-B-Q grills in the dedicated picnic area near the Visitor Center.

Be considerate of others – Be courteous. Practice and model proper trail etiquette. Let nature's sounds prevail

To all the Trail Ambassadors, Crew Leaders, Volunteers and park staff, hope you have wonderful holidays. The very best to us all in 2021.

Janie Brier

Trail Ambassador Director

Does It Pay To Designate KMTC On Smile.Amazon.Com?

Well, let me put it this way, for last quarter, we received \$28.76. And since registering with Amazon, we have received \$407.23. Now, neither amount will make us rich nor completely fund our operations, but as a reminder, we have provided snacks and water up till now for all of our volunteers on most of our monthly work days. And this amount certainly covers a portion of that.

Therefore, I can say for sure, every donation, no matter how small, helps us to maintain the trails here at the Park. So, to all of you who have donated or plan to, we thank you and graciously appreciate any and all donations, either received directly or by way of your purchases through Amazon.

Thank you!

Fred Feltmann

“Skepticism” (Oh No-That Can't Be)

It happened again. A word which I hadn't heard in quite awhile; skepticism. And, as usual, I've already forgotten the program where I heard it. However I did look it up and frankly, I like the philosophical definition the best; “The theory that certain knowledge is impossible.” That theory makes me think about working on mountain trails. If you'd like to have some fun (while you're really not doing much anyway) go back and read this (last) year's newsletters. The first couple of the year's monthly Trail Days were either canceled or shortened due to rain - and then it snowed! Then early this year the pandemic hit and the park was closed for a while.

Since the park reopened there have been very few work sessions and then with just several volunteers. A knowledge of all that happened was impossible to plan for. Now, I've been keeping up with what has been going on at the park and Trails Director Bill Gurry has told me that he has detailed plans for future work projects. That is good planning and very important to maintaining the condition of the park. What is done out there is never certain and can not be foreseen when planning as so many things can change. For example, roots pop up, rocks slide, trail sections wash away, trees fall and of course there is the ever changing weather. Anybody would have to be an optimist to go out there and even try. That's what it takes; you have to believe that even though you can't know what you may encounter, just do your best.

Even though I've heard that we'll have, “Difficult months ahead of us.” Hopefully we'll approach them with a certain amount of skepticism. Certainly I see many people visiting the park on nice weather days, they're trusting that all will be well; trails in good shape, things all cleaned up. But just like throwing a ball, being sure that it will be caught is not certain. One just doesn't know when plans go awry, the weather turns bad or the throw is just off and the ball is uncatchable.

Of course we don't know everything and never will, that's enough knowledge for me. January 1st is the beginning of the New Year; let's all plan and work to make it a good one!

Thanks,

Doug Tasse

New Park Maps Available!

Three new park maps have been released and are available on our website!

<http://www.kennesawmountaintrailclub.org/hikingmap.php>

Samples are available pages 12 - 14 of this newsletter.



A Special Thanks!

Each year we have various groups who come out and help us. Henceforth, we will make every attempt to list your group here for the current/past fiscal year. If you are participating as a group, be sure to let us know when you are registering!

Following is a list, in alphabetical order, of the groups who participated during Fiscal 2019 (October 2019- September 2020 and Fiscal 2021 (October 2020- Present):

FY 2020

ALLATOONA HS NJROTC
BOY SCOUT TROOP 89
KING'S ACADEMY HS ARMY JROTC
HILLGROVE HS NJROTC
POPE HS - NATIONAL HONOR SOCIETY
RIVER RIDGE HS
RIVER RIDGE HS ARMY JROTC
TRUST (KSU)
WALKER HS



FY 2021

KSU CROSS COUNTRY TEAM
KSU ENVIRONMENTAL HEALTH ISSUES CLASS

We had 3 members of a KSU Environmental Health Issues class, along with their professor, participate in our December 12th work day, along with approximately 5 Crew Leaders. Their project was to participate in a Service Learning Experience - students are required to find an experience where they can give back while learning.

Thanks!



Crew Leader & Trail Ambassador Positions Available!

Contact Bill Gurry (regarding Crew Leader positions) or Janie Brier (Trail Ambassador positions) if interested.

Bill Gurry -

trails@kennesawmountaintrailclub.org

Janie Brier -

ambassador@kennesawmountaintrailclub.org

Adieu, Cam, We'll Miss You!

Cam:



Thank you for all you've done and accomplished with the Trail Club! We wish you well in all of your future endeavors!

We received this note from Cam a few weeks ago. In part he said:

"Yes, I've moved to Cumming and will be selling my Cobb County house soon.

No words can express the personal satisfaction I have had in giving back to the community volunteering with Kennesaw Mountain National Battlefield Park. When school field trips resume, please keep me in mind for a volunteer role. It's worth the 60 mile roundtrip to see the wonderment and joy we generate for our field trip kids."

Cam has served as a Trail Ambassador and Crew Leader for many years and was also the Trail Ambassador Director for several years. He is/was a great asset to the Club and had many great ideas and is/was a person we could always count on for support.

Thanks, Cam!

Fred Feltmann



Wanted: Membership Chair!

"The Friends of Kennesaw Mountain National Battlefield Park is looking for a personable, self-starting, take-charge volunteer to lead their membership team. Contact Scott Mackay at box2105@mindspring.com."

MAY THE BEAUTY OF NATURE
BRIGITEN YOUR CHRISTMAS

and all the days of the year

can't wait for the trail club work
to officially begin again - sometimes
I can almost hear the trail "groaning"
as I walk - needing to be restored -
but I know we will get back soon -
Thanks for all you do! -
Merry Christmas!



The Trail Club

Fred - I received a Christmas
card & donation from
I thought her message would
be included in the newsletter.

Best, MD

2021/2022 Fund Raising

Your volunteer hours help greatly for the many projects we do in the park and we greatly appreciate you contributing your “sweat equity” alongside our 80+ staff volunteers who routinely support each event. We are a non-profit all volunteer organization. However, like any business, we do have bills to pay.

Many of our projects are funded by the park or through grants we apply for. These funds are typically targeted for specific projects and do cover the big expenses such as rocks, stone dust, dirt, wood beams, bridges, fences, and such. But, after all the big stuff is paid for, we still have need to cover our day-to-day operating expenses for things like saw blade sharpening, fuel, tool repairs, equipment maintenance, work gloves, bug spray, drinking water, snacks, and porta-potties, along with basic business expenses - e.g. insurance. For these expenses, we rely on your donations.

Each year we kick off a new round of fund raising and this is the 2021/2022 big “ask.” We need your help with this, even small donations help. We will conclude this drive at the end of FY 2022 (September, 2022).

As we approach our 19th year in operation, we ask you to please think ‘20’, like \$20.. \$40.. \$60..... \$200... \$2000. All donations to the Trail Club support our work at the park, and are tax deductible.

We are a nationally recognized club - having been presented the highest award in the National Park Service in 2014, “The Hartzog Award for Volunteer Group.” There are several ways to donate:

- Use Guidestar on the bottom of our home page on the Trail Club website <http://www.kennesawmountaintrailclub.org>
- Subscribe to Amazon “Smile” where they will donate to us based on your purchases <https://smile.amazon.com/> - look for KEMO Trails Corps
- Send a tax deductible contribution to:

Kennesaw Mountain Trail Club*
Attn: Tom Okerberg
Whitlock Accounting Services
739 Kennesaw Avenue NW
Marietta, Ga. 30060

ALSO: Please check with employers about matching donations.

* Corporate name is KEMO Trail Corps, Inc., a 501(c)(3) organization.



Kennesaw Mountain Trail Club Calendar

Date Time Location Event

All Work Days and events at Kennesaw Mountain National Battlefield Park are cancelled indefinitely at this point.

All trails are now open. All parking lots, and the Mountain Rd., are now open. Visitor Center is now open. The Mountain Rd. is still closed to motorized vehicles, however.

The Park staff is conducting Virtual Events on their Facebook Page - https://www.facebook.com/pg/KMNBP/posts/?ref=page_internal

We will send out an email when events warrant a restart of work days and events and when the Visitor Center reopens.

The Mountain Top Concession Stand is now open daily from 10 AM till 5 PM.

Register for Our Work Days!

Be sure to register online for our Work Days at [http://](http://signup.com/go/VvayYQj)

signup.com/go/VvayYQj. By registering, we can be better prepared with the amount of tools, bottled water, gloves, etc. on hand.



Mark Your Calendars!

Upcoming Work Day Schedule:

All planned work days for the upcoming months have been cancelled until further notice.

If your school, church, business, or community organization would like to schedule a special work day as a team building or public service activity once we resume our work day schedules, e-mail us at kmtctrails@kennesawmountaintrailclub.org at least 4 weeks in advance. Trail work can be performed any day of the week.

We work closely with the Park Service and assist the park staff by providing critically needed volunteer effort to install signs, build bridges, and maintain the 20+ miles of trails. Since our beginning in 2002, the Trail Club has donated over 45,000 volunteer hours to Kennesaw Mountain National Battlefield Park.

We hope to see you at a work day as soon as we return to our normal work days.

Work Day - 12/12/20

Photos by Fred Feltmann





National Park Service
U.S. Department of the Interior

Chattahoochee River
National Recreation Area

Kennesaw Mountain
National Battlefield Park

1978 Island Ford Parkway
Sandy Springs, GA 30350

900 Kennesaw Mountain Dr
Kennesaw, GA 31052

National Park Service News Release

FOR IMMEDIATE RELEASE

CONTACTS:

Ann Honious, Chattahoochee River National Recreation Area, 770-318-2829

Patrick Gamman, Kennesaw Mountain National Battlefield Park, 770-427-4686 x223

Bag and Bin It: Help Improve Chattahoochee River Water Quality

SANDY SPRINGS, GA & KENNESAW, GA - Chattahoochee River National Recreation Area (Chattahoochee River NRA), [Chattahoochee National Park Conservancy](#) (CNPC), and Kennesaw Mountain National Battlefield Park (Kennesaw Mountain NBP) are teaming up to reduce dog waste in two of metro Atlanta's national park units. With design and funding support from CNPC, Chattahoochee River NRA and Kennesaw Mountain NBP are installing new dog waste bins at major trailheads and visitor use areas throughout both national parks to encourage visitors to "bag and bin it."

Approximately 37.6% of metro Atlanta residents own dogs, and many visitors bring their dogs along on their visits to the Chattahoochee River NRA and Kennesaw Mountain NBP. Dog waste poses a risk to the health of park visitors and wildlife, directly through physical contact and indirectly through elevated bacteria levels in nearby water supplies. Both Chattahoochee River NRA and Kennesaw Mountain NBP are asking park visitors to help decrease the dog waste that enters the Chattahoochee River watershed by correctly disposing of dog waste. Both parks have struggled with visitors not picking up dog waste or leaving bagged dog waste on the side of park trails. Even if the bags are biodegradable, dog waste will still contaminate the ground or nearby water sources.

"With 70% of the metro area's drinking water coming from the Chattahoochee River, it's imperative that we take actions to prevent dog waste from entering the water supply and raising bacteria levels," **commented Acting Superintendent Ann Honious.** "Dog waste is not a fertilizer. It actually contains deadly bacteria that enters the ecosystem and the water supply. Our goal is to create a safe and enjoyable experience for all visitors along the Chattahoochee River, and that includes educating visitors about the environmental impacts of dog waste and promoting the proper disposal of unsightly dog waste throughout all park units."

To help solve this problem, the board of CNPC partnered with students at Atlanta's Miami Ad School in 2017 to engage Chattahoochee River NRA visitors and encourage dog owners to pick up and properly dispose of their dogs' waste. The partnership led to a creative campaign to educate visitors about the ecological importance of proper waste disposal and a goal to make dog waste stations more accessible in areas of high visitation throughout the Park. With a mix of private donations and NPS Centennial Challenge funds, Chattahoochee River NRA and CNPC purchased 37 new dog waste stations to be used throughout the Park with new signage using a design created by Miami Ad School students. This project is the culmination of three years of work by CNPC,

EXPERIENCE YOUR AMERICA™

The National Park Service cares for special places saved by the American people so that all may experience our heritage.

Newsletter 10

<http://kennesawmountaintrailclub.org>

Chattahoochee River NRA, and students from the Miami Ad School to reduce inappropriate dog waste in the Park in the Chattahoochee River.

Kennesaw Mountain NBP teamed up with Chattahoochee River NRA and CNPC in 2020 to expand the dog waste campaign to Kennesaw Mountain and install more dog waste bins on park trails with funding from the [Friends of Kennesaw Mountain National Battlefield Park](#). “Here at Kennesaw Mountain National Battlefield Park, we have many miles of trails that are great for taking your dog on a hike,” said **Superintendent Patrick Gamman**. We wanted to join Chattahoochee River NRA in making your experience the best it can be. With more and better placed bins, both parks will be cleaner and more enjoyable for everyone. Thanks for helping us take care of these special places.”

Together, Chattahoochee River NRA, CNPC, and Kennesaw Mountain NBP are working to promote good dog waste etiquette and encourage visitors to “lead the pack” and “bag and bin it.” More information, including the locations of dog waste receptacles in both parks, can be found on the [Chattahoochee River NRA](#) and [Kennesaw Mountain NBP](#) websites.

www.nps.gov

About the National Park Service. More than 20,000 National Park Service employees care for America’s 423 national parks and work with communities across the nation to help preserve local history and create close-to-home recreational opportunities. Learn more at www.nps.gov, and on [Facebook](#), [Instagram](#), [Twitter](#), and [YouTube](#).

EXPERIENCE YOUR AMERICA™

The National Park Service cares for special places saved by the American people so that all may experience our heritage.

Newsletter 11

<http://kennesawmountaintrailclub.org>

PROTECT OUR ENVIRONMENT - BAG AND BIN IT

LEAD THE PACK

FROM BAG TO BIN



BAGGED WASTE ON THE TRAILS IS STILL WASTE!



National Park Service
U.S. Department of the Interior
Kennesaw Mountain
National Battlefield Park
Chattahoochee River
National Recreation Area



For more information on how
to properly dispose of trash and
water resources, get to



Cam Graham - A Photo Essay

Thanks, Cam, for all you've done!



Contact List - Updated 10/27/20

<u>POSITION</u>	<u>NAME</u>	<u>E-MAIL</u>
President	Donald Olds	president@kennesawmountaintrailclub.org
Vice President	Vacant*	vp@kennesawmountaintrailclub.org
Secretary	Robert Brier	secretary@kennesawmountaintrailclub.org
Treasurer	Tom Okerberg	treasurer@kennesawmountaintrailclub.org
Trails Director	Bill Gurry	trails@kennesawmountaintrailclub.org
Community Volunteer Director	Rena Bailey	volunteerdirector@kennesawmountaintrailclub.org
Communications Director	Fred Feltmann	comdirector@kennesawmountaintrailclub.org
Newsletter Editor	Fred Feltmann	comdirector@kennesawmountaintrailclub.org
Information/Technology Director	Jerry Givan	webmaster@kennesawmountaintrailclub.org
Trail Ambassador Director	Janie Brier	ambassador@kennesawmountaintrailclub.org
Plants Director	Danny Leigh	plants@kennesawmountaintrailclub.org
Fundraising Director	Scott Mackay	fundraising@kennesawmountaintrailclub.org
Records Management*	Laurie Poppell*	records-management@kmtrailclub.onmicrosoft.com
Amazon Smile		https://smile.amazon.com/
KMTC Website		http://kennesawmountaintrailclub.org/
NPS Website		https://www.nps.gov.KEMO
Facebook Page		http://www.facebook.com/kmtcsocial
Volunteer Sign-up website		http://signup.com/go/VvavYQj

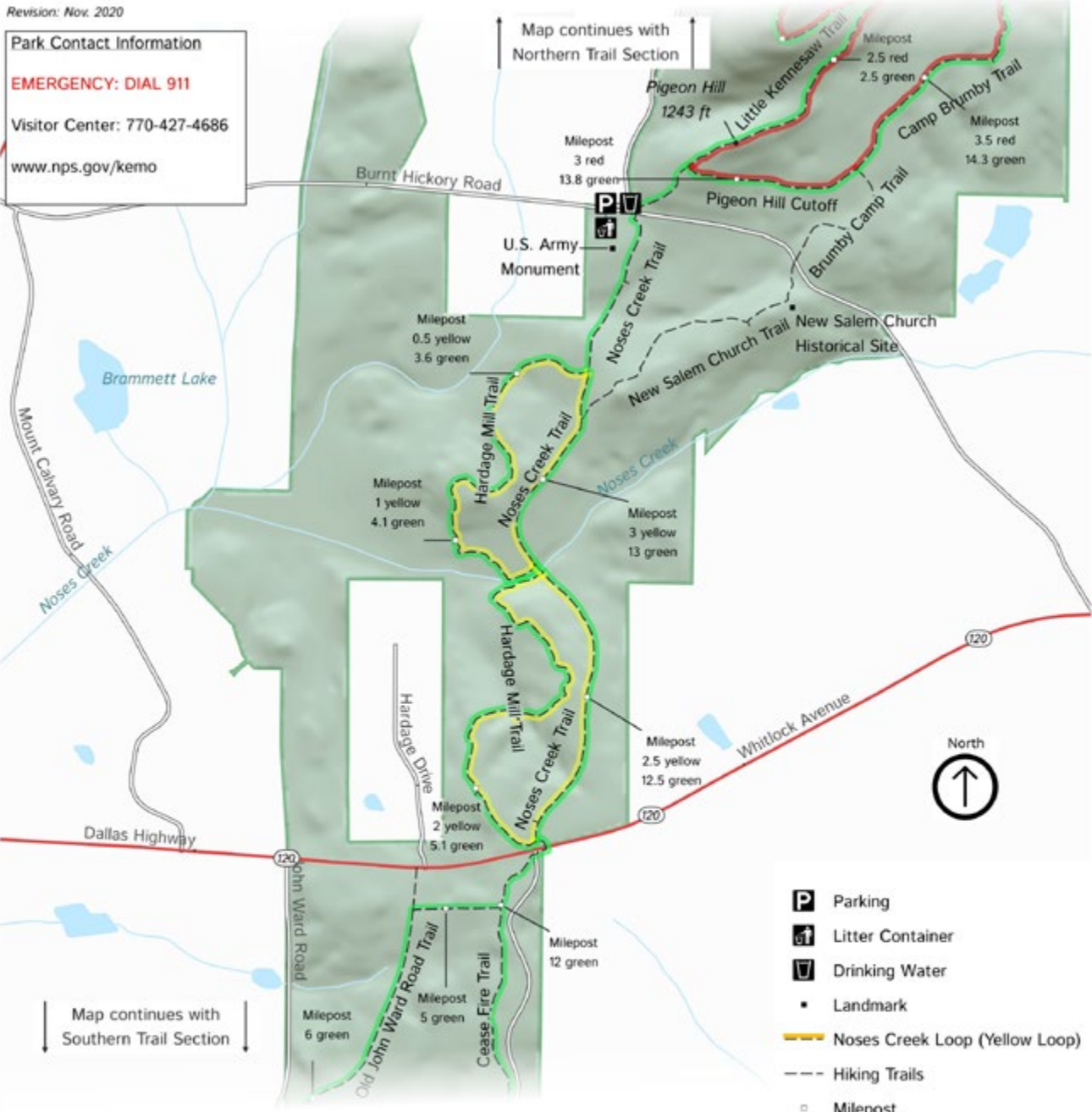
* updated

New Park Maps!

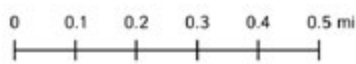
Kennesaw Mountain National Battlefield Park Central Trail Section

Revision: Nov. 2020

Park Contact Information
EMERGENCY: DIAL 911
 Visitor Center: 770-427-4686
www.nps.gov/kemo



Trail	Distance
Noses Creek (Yellow) Loop	3.6 mi
Hardage Mill North Trail	0.9 mi
Hardage Mill South Trail	1.0 mi
Noses Creek Trail	1.4 mi



- Parking
- Litter Container
- Drinking Water
- Landmark
- Noses Creek Loop (Yellow Loop)
- Hiking Trails
- Milepost
- Park Property



Kennesaw Mountain National Battlefield Park

Northern Trail Section

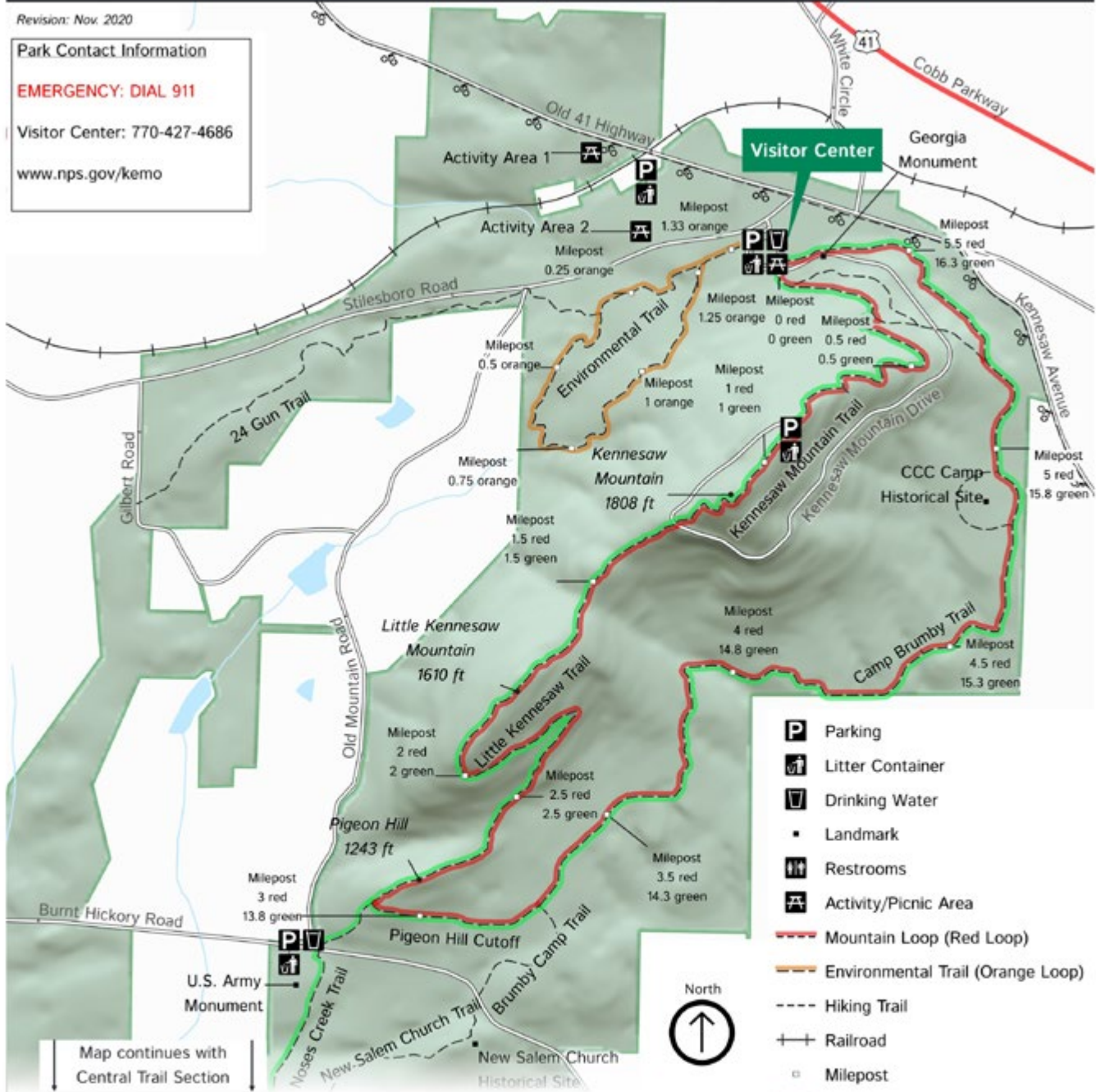
Revision: Nov. 2020

Park Contact Information

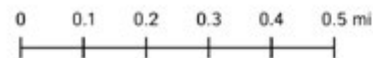
EMERGENCY: DIAL 911

Visitor Center: 770-427-4686

www.nps.gov/kemo



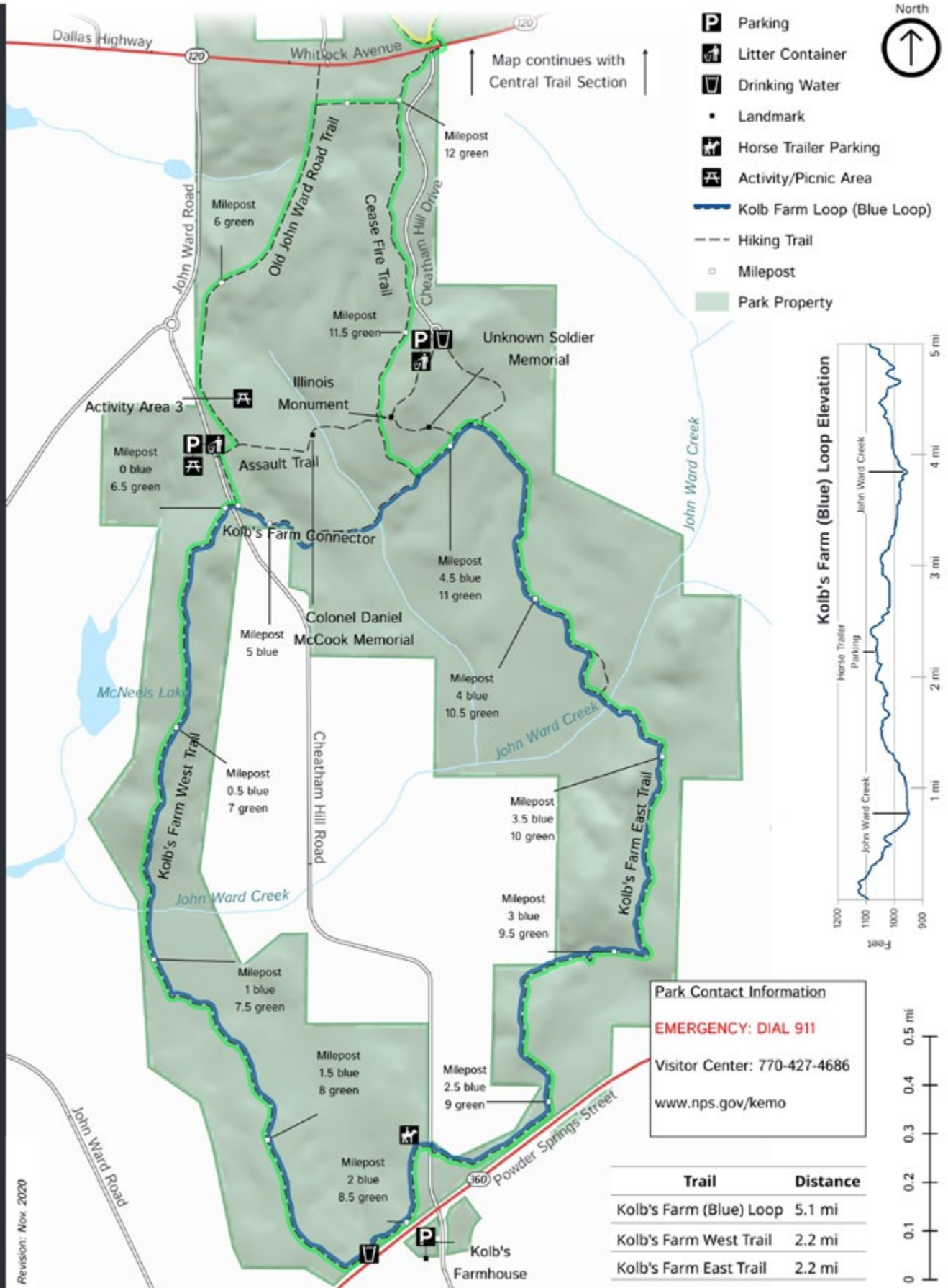
Trail	Distance
Mountain (Red) Loop	5.8 mi
Environmental (Orange) Loop	1.33 mi
24 Gun Trail	1.15 mi
Kennesaw Mountain Drive (One Way)	1.52 mi
Green Loop	16.6 mi



Southern Trail Section

Kennesaw Mountain National Battlefield Park

Revision: Nov. 2020



Sponsors/Partners Corner

Many thanks to our Sponsors and Partners for their support!



<http://americanhiking.org>



KENNESAW MOUNTAIN NATIONAL BATTLEFIELD PARK

Trail Maintenance Map

